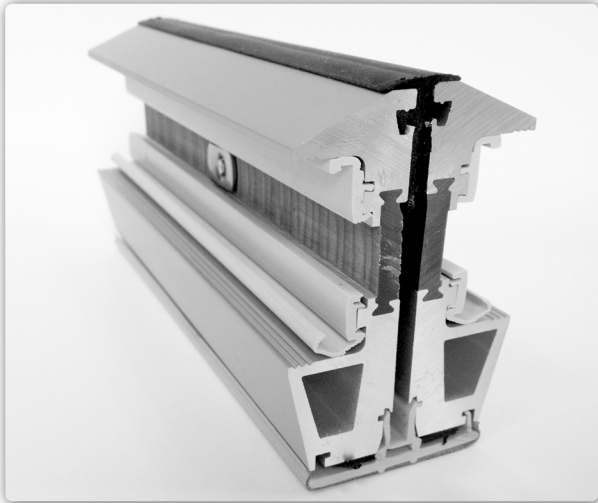


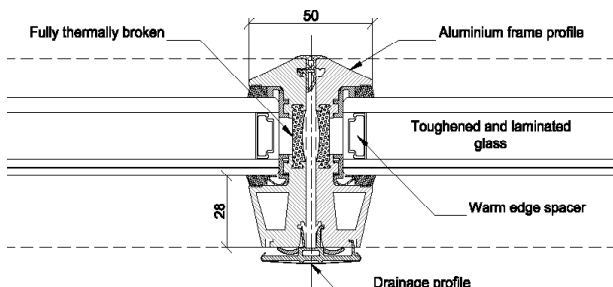
PRODUCT DESCRIPTION

VITRAL A74 is a panel based roof light system with profiles in aluminium. A74 is characterized by nice design and slim and low profiles. The A74 system does not have a carrier frame as with patent glazing and curtain walling. This means every panel is capable of opening without the need for extra framing, so maintaining low U-values, controlling costs and maximizing the amount of daylight through the system: thermally broken framed panel system for everyday buildings! VITRAL A74 roof lights are impact tested as standard to TN66/67 to protect those carrying out roof maintenance and cleaning.



MATERIAL

VITRAL A74 roof light system is constructed from glass, high quality aluminium, plastic and rubber. The frames are thermally broken with an integrated PUR core. All materials are recyclable.



GLASS TYPE

VITRAL A74 roof light system uses low 'e' insulated glass units with Argon fill and "warm edge" spacer. VITRAL A74 is also available with triple glazed low 'e' insulated glass units with Krypton fill and "warm edge" spacer. All panels use toughened over laminated safety units. A complete range of multi-coated solar control options are available to suit the project.

U-VALUE

Double glazed units:

- U-value for the A74 system overall is 1.6 W/m²K.*
- U-value for the glass is 1.1 W/m²K.

Triple glazed units:

- U-value for the A74 system overall is 1.0 W/m²K.*
- U-value for the glass is 0.7 W/m²K.

* U-values are calculated according to EN14351 (part of CE standard). Specific roof light U-value will be calculated individually for every case.

FINISH

VITRAL A74 is available in natural anodised aluminium or PPC to any RAL colour. A wide variety of colours are available, please contact us for more information.

ASSEMBLY – READY TO INSTALL

VITRAL A74 is delivered in prefabricated modular panels for safer and quicker site installation. Fully framed panels provide support and edge protection for glass on all sides preventing breakages on site and reducing potential injuries.

Installation of the A74 system starts with pre-notched head profiles that carry the panels in exactly the correct position. Once in place each panel is connected to the profile and locked in place. A pre-determined space separates each panel and acts as a movement joint. Gaskets sit between panels and at junctions around the perimeter of the glazing providing a thermal and air tight seal. All perimeter junctions are double sealed.

VENTILATION

Uniquely, VITRAL offer invisible opening vents across their range. Other systems such as curtain walling or patent glazing require carrier frames which result in loss of thermal performance and air-tightness. VITRAL A74 seamlessly integrates opening vents without the need for extra frames providing natural and smoke ventilation without loss of performance.

Up to 50% of panels can be opening vents or easily turned into opening vents at a later date ensuring the space is cool and airy when required.



DIMENSIONS, POSSIBILITIES & LIMITATIONS

VITRAL A74 roof lights offer many possibilities for bringing your ideas to life, such as single pitch or double pitch, gables, hips, valleys and pyramids, in-laid roof lights, single or multiple tier. VITRAL A74 roof lights can also be installed vertically.

Profile dimensions:

- Height: 74 mm
- Width: 50 mm

Panel dimensions:

- Height: 250-2900 mm
- Width: 250-1200 mm
- Panel area: Max. 2 m²

Installation pitch:

- Single pitch roof light: 15-90°
- Double pitch roof light: 25-60° (15° if fully supported)

Panel size depends on pitch and other static conditions. VITRAL perform static calculations for every project.

WARRANTY

VITRAL A74 comes with a 5 year warranty and a 2 year warranty for opening mechanisms. VITRAL A74 is CE marked according to DS/EN14351-1. A74 roof lights can also be part of the building's fire strategy - EN12101-2 Natural Smoke and Fire Ventilation. VITRAL has the ISO9001:2008 certification.

SUPPORT & CALCULATION SERVICE

At VITRAL, we are always ready to answer your questions about roof glazing, flat roof lights, U-values, static panel calculations, budgets and details.

ABOUT VITRAL

VITRAL is renowned for manufacturing roof lights that offer exceptional quality, performance and aesthetics. These simple qualities are the essence of every good building, so why compromise?

CONTACT VITRAL

VITRAL UK LTD.

83 High Street
Linton
Cambridgeshire, CB21 4JT
Tel: +44 1223 499 000
vital-uk@vital.co.uk
www.vital.co.uk

